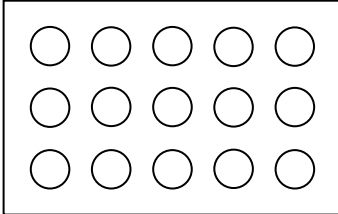


Name _____ Date _____

(5A)

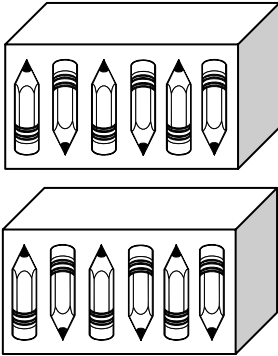
1. Which number fact goes with this picture?



- $5 + 3$
 $3 + 15$
 3×5
 5×15

(5A)

2. Sandy had 2 boxes. Inside each box was 6 pencils. Which fact could be used to find out how many pencils Sandy had in all?



- $6 + 2$
 $6 - 2$
 6×2
 $6 \div 2$

(6B)

3.

$$5 \times 5 =$$

- 10
 15
 20
 25

(6B)

4.

$$\begin{array}{r} 10 \\ \times 4 \\ \hline \end{array}$$

- 0
 4
 14
 40

(11A)

5. Mrs. Casarella (Cas uh rel luh) bought a toaster for \$18 and a coffee maker for \$49. ABOUT how much money did both items cost?

- \$50
 \$60
 \$70
 \$80

(11A)

6. Miss Stopper drove her motorcycle 218 miles on Saturday and 197 miles on Sunday. **About** how many miles did Miss Stopper drive?

- less than 200
- about 300
- close to 400
- more than 500

(11A)

9. Mrs. Szwed bought between 5 and 9 books a month for 12 months. **About** how many books could she have bought?

- 20
- 50
- 80
- 110

(11A)

7. The bookstore sold 62 books on Tuesday and 28 books on Wednesday. **About** how many more books were sold on Tuesday than on Wednesday?

- A little less than 30
- A little more than 30
- A little less than 40
- A little more than 40

(11A)

10. Mrs. Melenski (Muh len skee) had 57 cupcakes. Her students ate 19 of the cupcakes. **About** how many of the cupcakes did not get eaten?

- less than 30
- between 30 and 40
- between 40 and 50
- more than 50

(11A)

8. One bag of peanuts had 28 peanuts inside. Another bag had 39 peanuts inside. **ABOUT** how many peanuts were in both bags?

- A little less than 70
- A little more than 70
- A little less than 80
- A little more than 80

(11A)

11. Mrs. Motyl (Mo tel) has 83 diamond necklaces. Mrs. Slipke (Slip kee) has 59 diamond necklaces. **About** how many necklaces does Mrs. Slipke need to have as many as Mrs. Motyl?

- a little less than 10
- between 10 and 20
- between 20 and 30
- a little more than 30

(25A)

12. Mrs. Rich is deciding on which side of her house to plant flowers that are in 4 boxes. The chart shows the number of flowers in each box.

Box A	Box B	Box C	Box D
55	60	25	45

- There are 4 sides to her house (front, back, left side, right side).
- Each side has room for only 50 flowers.
- Mrs. Rich needs to decide how many flowers should be moved from the boxes so that they can fit on the 4 sides of her house.
- In the space below, show how many flowers should be moved from which boxes so that they can fit on all 4 sides of her house.
- Explain how you got your answer.

November 26, 2005

Topic 8: Developing Multiplication Concepts:

- 5A: Relate multiplication facts to rectangular arrays and pictures.
- 6B: Multiply by 2, 5, and 10.

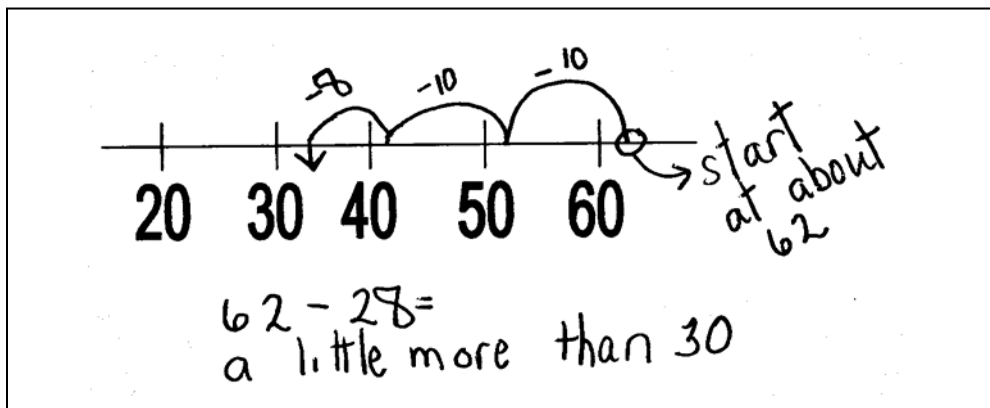
CMT Objectives NOT Covered in Topic 8:

- 11A: Identify a reasonable estimate to a problem.
- 25A: Solve extended statistical problems.

Please Note: A strategy using Number Lines and Counting by Tens is included in this packet. I encourage you to try this strategy with your students. It is very useful in both addition AND subtraction problems. It is also useful with Special Ed. students. It can be used with most estimation problems (except for "In the Ball Park" problems).

7. The bookstore sold 62 books on Tuesday and 28 books on Wednesday. **About** how many more books were sold on Tuesday than on Wednesday?

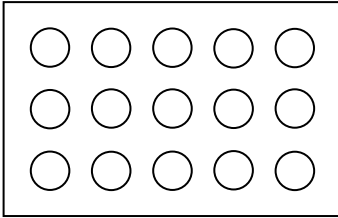
- A little less than 30
- A little more than 30 ***
- A little less than 40
- A little more than 40



ANSWERS

(5A)

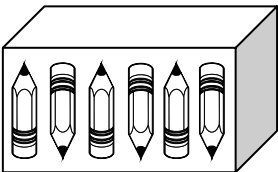
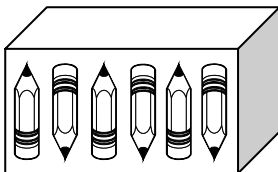
1. Which number fact goes with this picture?



- 5 + 3
 3 + 15
 3 x 5 ***
 5 x 15

(5A)

2. Sandy had 2 boxes. Inside each box was 6 pencils. Which fact could be used to find out how many pencils Sandy had in all?



- 6 + 2
 6 - 2
 6 x 2 ***
 6 ÷ 2

(6B)

3.

$$5 \times 5 =$$

- 10
 15
 20
 25 ***

(6B)

4.

$$\begin{array}{r} 10 \\ \times 4 \\ \hline \end{array}$$

- 0
 4
 14
 40 ***

(11A)

5. Mrs. Casarella (Cas uh rel luh) bought a toaster for \$18 and a coffee maker for \$49. ABOUT how much money did both items cost?

- \$50
 \$60
 \$70 ***
 \$80

$$\begin{array}{r} 18 \rightarrow 18 \\ 49 \rightarrow \underline{50} \\ 68 \end{array}$$

$$\begin{array}{r} 18 \\ +49 \\ \hline 40 + 10 = 50 \\ 8 = \text{almost } 10 \\ 9 = \text{almost } 10 \\ \text{TOTAL: } 50 + \text{almost } 20 = \\ \text{almost } 70 \end{array}$$

(11A)

6. Miss Stopper drove her motorcycle 218 miles on Saturday and 197 miles on Sunday. **About** how many miles did Miss Stopper drive?

- less than 200
- about 300
- close to 400 ***
- more than 500

$218 \rightarrow 218$ $197 \rightarrow 200$ total: 418
--

(11A)

9. Mrs. Szwed bought between 5 and 9 books a month for 12 months. **About** how many books could she have bought?

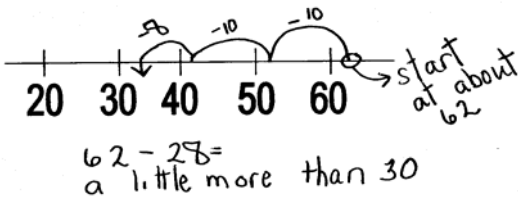
- 20
- 50
- 80 **
- 110

5 books	9books
12	$9 \times 10 = 90$
24	$9 \times 2 = 18$
36	TOTAL:
48	108
60	

(11A)

7. The bookstore sold 62 books on Tuesday and 28 books on Wednesday. **About** how many more books were sold on Tuesday than on Wednesday?

- A little less than 30
- A little more than 30 ***
- A little less than 40
- A little more than 40



(11A)

10. Mrs. Melenski (Muh len skee) had 57 cupcakes. Her students ate 19 of the cupcakes. **About** how many of the cupcakes did not get eaten?

- less than 30
- between 30 and 40 ***
- between 40 and 50
- more than 50

$57 - 20$ $= 37$

(11A)

8. One bag of peanuts had 28 peanuts inside. Another bag had 39 peanuts inside. **ABOUT** how many peanuts were in both bags?

- A little less than 70 ***
- A little more than 70
- A little less than 80
- A little more than 80

$28 + 40 = 68$

$83 - 60 = 23$

(11A)

11. Mrs. Motyl (Mo tel) has 83 diamond necklaces. Mrs. Slipke (Slip kee) has 59 diamond necklaces. **About** how many necklaces does Mrs. Slipke need to have as many as Mrs. Motyl?

- a little less than 10
- between 10 and 20
- between 20 and 30 ***
- a little more than 30

(25A)

12. Mrs. Rich is deciding on which side of her house to plant flowers that are in 4 boxes. The chart shows the number of flowers in each box.

Box A	Box B	Box C	Box D
55	60	25	45

- There are 4 sides to her house (front, back, left side, right side).
- Each side has room for only 50 flowers.
- Mrs. Rich needs to decide how many flowers should be moved from the boxes so that they can fit on the 4 sides of her house.
- In the space below, show how many flowers should be moved from which boxes so that they can fit on all 4 sides of her house.
- Explain how you got your answer.

One solution: Move 5 cards from Box A to Box D

$$\text{Box A: } 55 - 50 = 5 \text{ flowers}$$

$$\text{Box D: } 45 + 5 = 50 \text{ flowers}$$

Move 10 cards from Box B to Box C

$$\text{Box B: } 60 - 50 = 10 \text{ flowers}$$

$$\text{Box C: } 25 + 10 = 35 \text{ flowers}$$

Another solution: Move 5 cards from Box A to Box C

$$\text{Box A: } 55 - 50 = 5 \text{ flowers}$$

Move 10 cards from Box B to Box C

$$\text{Box B: } 60 - 50 = 10 \text{ flowers}$$

$$\text{Box C now has } 25 + 5 + 10 = 40 \text{ flowers}$$

Another solution (More Complicated):

Box A	Box B	Box C	Box D
1) $55 - 25 = 25$ flowers Send 25 flowers to Box C	3) $60 - 5 = 55$ flowers (Send 5 to Box A)	2) $25 + 25 = 50$ flowers (from Box A)	6) $45 + 5$ from Box B = 50 flowers
4) $25 + 5 = 30$	5) $55 - 5 = 50$ (Send 5 to Box D)		