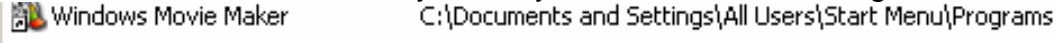
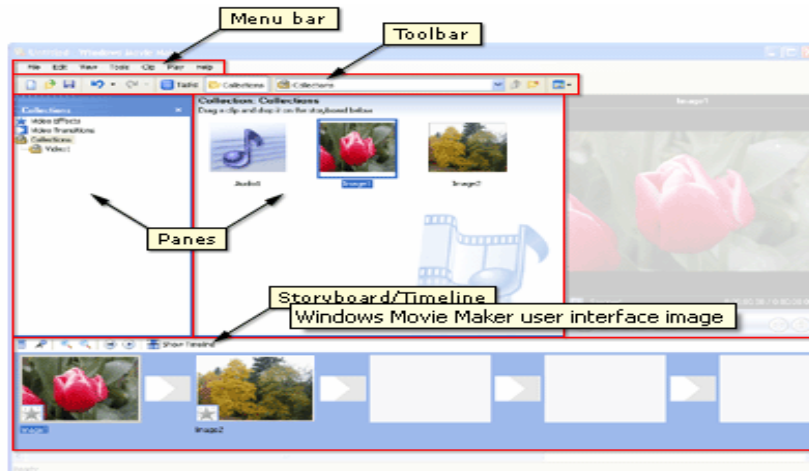
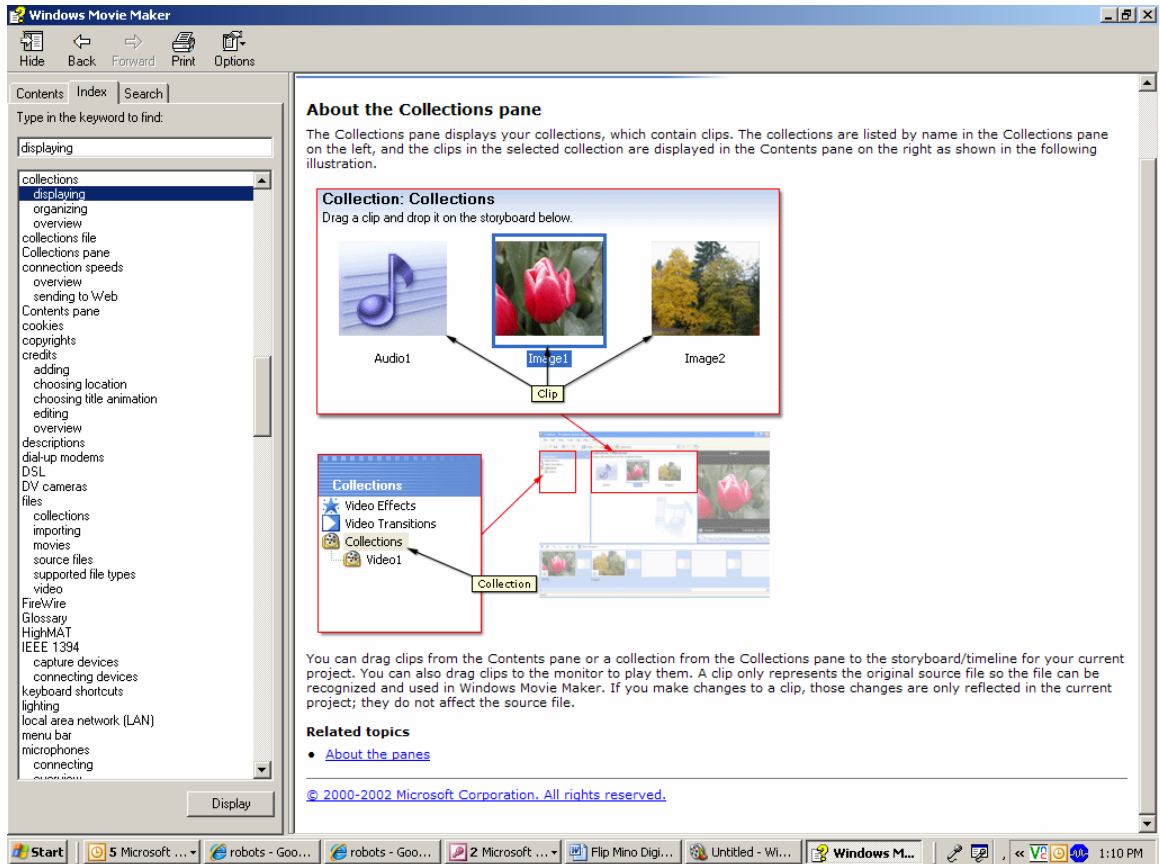


Flip Mino Digital Video Camera Part 2: Create Movies Using Windows Movie Maker April 2009

- Open Windows Movie Maker. It is not on the desktop so you will need to locate this program on your computer and place it on your desktop for future use. Go to the Start menu and select “Search”. Select “All Files and Folders”. In “All or Part of the File Name” type “Windows Movie Maker” and click “Search”. In your list you will see the following:
 Windows Movie Maker C:\Documents and Settings\All Users\Start Menu\Programs
- Right click on “Windows Movie Maker”, Select “Send To”, Select “Desktop (Create Shortcut)”. The next time you use Windows Movie Maker simply click on the newly created desktop icon.
- See below for basic illustration of Windows Movie Maker user interfaces:



- Import the video you saved in to Windows Movie Maker. Important buttons to note in the toolbar are Collections and Tasks.
- The Collections pane displays your collections, which contain clips. The collections are listed by name in the Collections pane on the left, and the clips in the selected collection are displayed in the Contents pane on the right as shown in the following illustration. You can drag clips from the Contents pane or a collection from the Collections pane to the storyboard/timeline for your current project. You can also drag clips to the monitor to play them. A clip only represents the original source file so the file can be recognized and used in Windows Movie Maker. If you make changes to a clip, those changes are only reflected in the current project; they do not affect the source file.



- The Tasks pane displays menu items for capturing video, editing a movie, finishing and saving a movie and movie-making tips.
- Note – all of the menu items in Movie Maker expand and contract, using the arrows next to the menu titles. In the “Capture Video” menu, select “Import Video”. Navigate to the video you saved in your network folder.
- In order to edit the video and create a movie you will need to drag the imported video in to the project area of the program. You can show the project as either a timeline or storyboard. We generally use the timeline view. Here are some of the things that you can do to edit the movie. For more detailed instructions please attend one of the Movie Maker workshops, use the “help” feature in Movie Maker or request technical assistance from the Computer Lab staff.
 - Trim either end of the video
 - Use the “Edit Movie” menu options to view video effects, create transitions, title slides and credit slides.
 - Finish the movie and save it to your network folder. The film will be saved as a .wmv file and will play in Windows Media Player. If you would like to make this file accessible to other users please use the following folder:
V:\Public\Videos_2008-2009